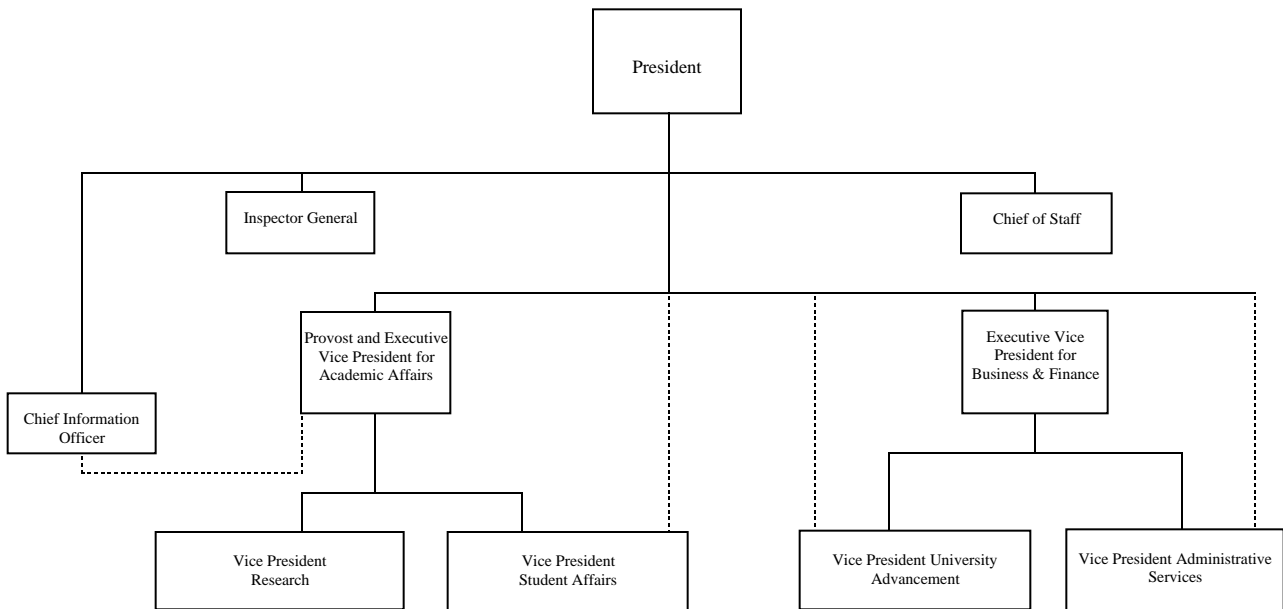


Florida International University
Organizational Chart



To obtain a complete view of Florida International University's Organizational Chart, please visit FIU's web site under Administration & Governance and select Organizational Chart: <http://www.fiu.edu/>
Source: President's Office

**Fall 2000 Employees
Filled Positions
University Wide**

By Gender

	Administrative & Professional	Faculty	USPS	Total
Female	310	400	729	1,439
Male	230	701	311	1,242
Other	3	0	44	47
Total	543	1,101	1,084	2,728

By Race

	Administrative & Professional	Faculty	USPS	Total
Asian	9	79	11	99
Black	73	79	157	309
Hispanic	201	152	574	927
Indian	0	5	3	8
White	236	716	263	1,215
Other	24	70	76	170
Total	543	1,101	1,084	2,728

By Occupation Type

	Administrative & Professional	Faculty	USPS	Total
Clerical and Secretarial	0	0	488	488
Executive, Admin. & Managerial	202	159	0	361
Instructional Faculty	0	816	0	816
Other Professional*	341	126	223	690
Service/Maintenance	0	0	137	137
Skilled Craft	0	0	89	89
Technical & Paraprofessional	0	0	147	147
Total	543	1,101	1,084	2,728

*Includes Librarians

**Fall 2000 Employees
Filled Ranked Instructional/Research Faculty Positions
University Wide**

By Gender

	Instructor	Assistant	Associate	Professor	Total
Female	53	83	96	37	269
Male	59	116	186	162	523
Total	112	199	282	199	792

By Race

	Instructor	Assistant	Associate	Professor	Total
Asian	7	11	29	11	58
Black	13	15	18	8	54
Hispanic	15	27	37	30	109
Indian	0	2	0	1	3
White	70	116	181	146	513
Other	7	28	17	3	55
Total	112	199	282	199	792

By Race By Gender

		Instructor	Assistant	Associate	Professor	Total
Asian	Female	2	4	5	1	12
	Male	5	7	24	10	46
Black	Female	7	6	8	1	22
	Male	6	9	10	7	32
Hispanic	Female	11	13	13	6	43
	Male	4	14	24	24	66
Indian	Female	0	1	0	0	1
	Male	0	1	0	1	2
White	Female	32	54	67	29	182
	Male	38	62	114	117	331
Other	Female	1	5	3	0	9
	Male	6	23	14	3	46
Total		112	199	282	199	792

**Fall 2000 Employees
Filled Positions
University Wide
By Age Group**

Age	Admin. & Professional			USPS	Total
	Professional	Faculty			
20-24	12	1	80	93	
25-29	87	12	95	194	
30-34	75	75	87	237	
35-39	88	157	105	350	
40-44	70	151	139	360	
45-49	82	163	126	371	
50-54	57	202	144	403	
55-59	41	180	126	347	
60-64	17	106	92	215	
65-69	9	36	30	75	
70 and over	5	18	60	83	
Total	543	1,101	1,084	2,728	

**Faculty Filled Positions
By Academic Rank Type**

	No Rank Assigned	Faculty Ranks				Faculty Subtotal	Total
		Instructor	Assistant	Associate	Professor		
Exec/Admin.	34	10	1	42	72	125	159
Instr/Research	24	112	199	282	199	792	816
Prof/Serv.	107	13	4	2	0	19	126
Total	165	135	204	326	271	936	1,101

Source: Office of Institutional Research (SUPERSD-SUPFBCNT)