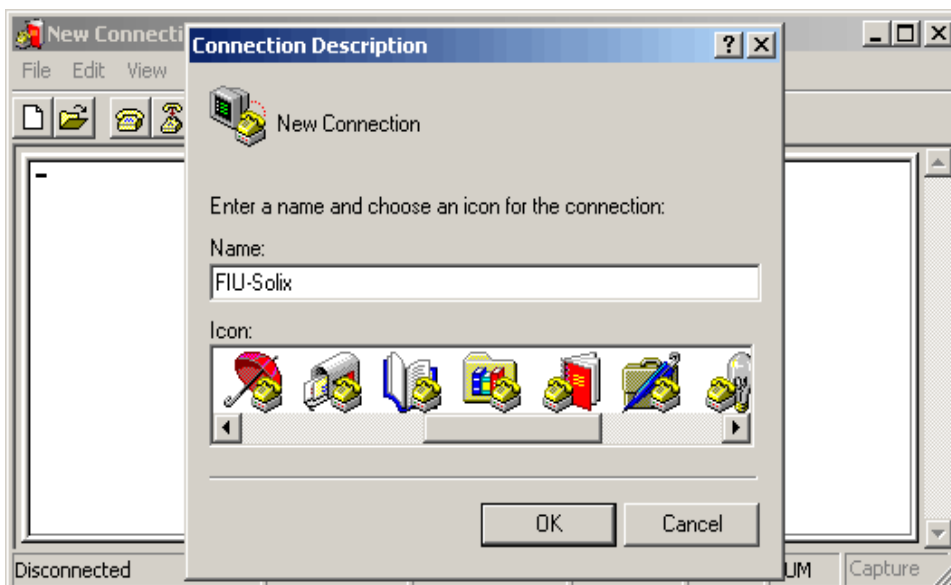
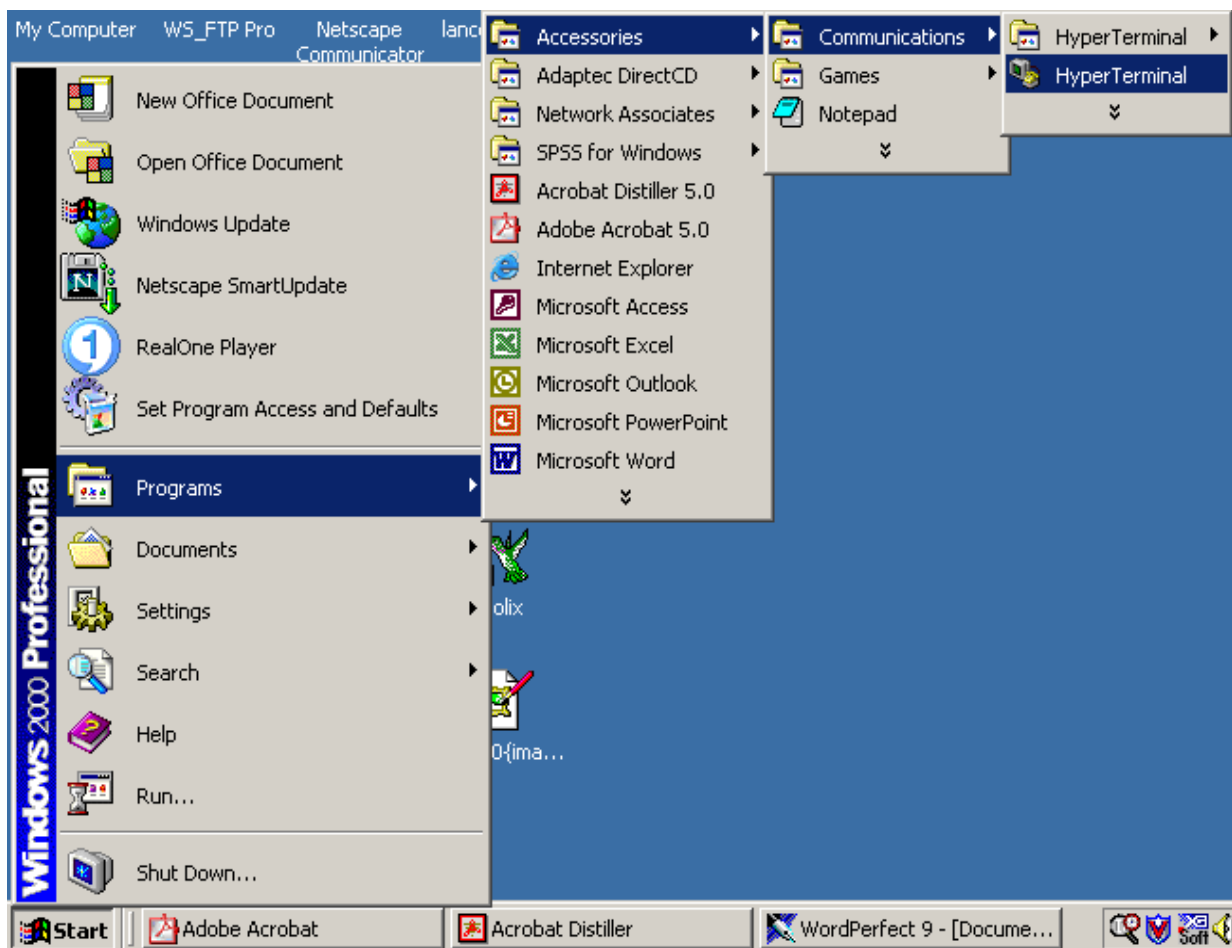


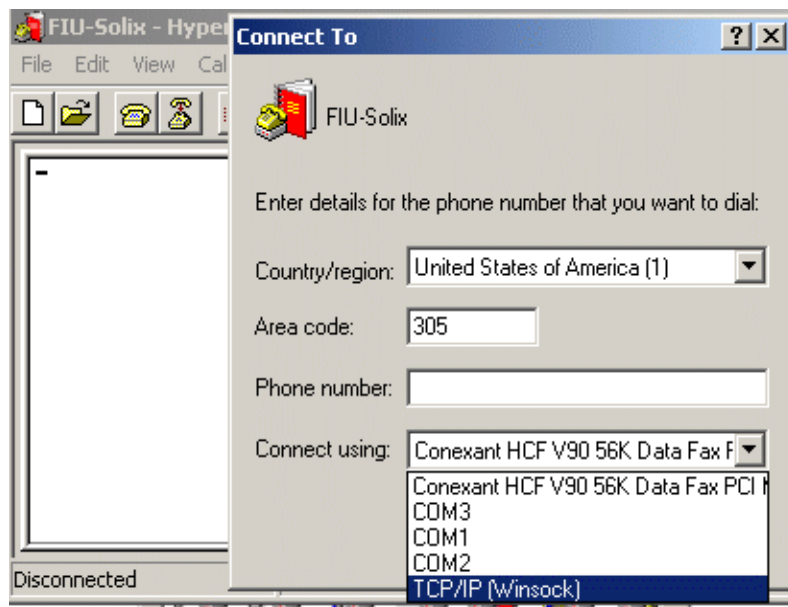
## Setting up HyperTerminal to Connect to Solix Using Your Internet Service Provider

Go to Start -> Accessories -> Communications -> HyperTerminal.

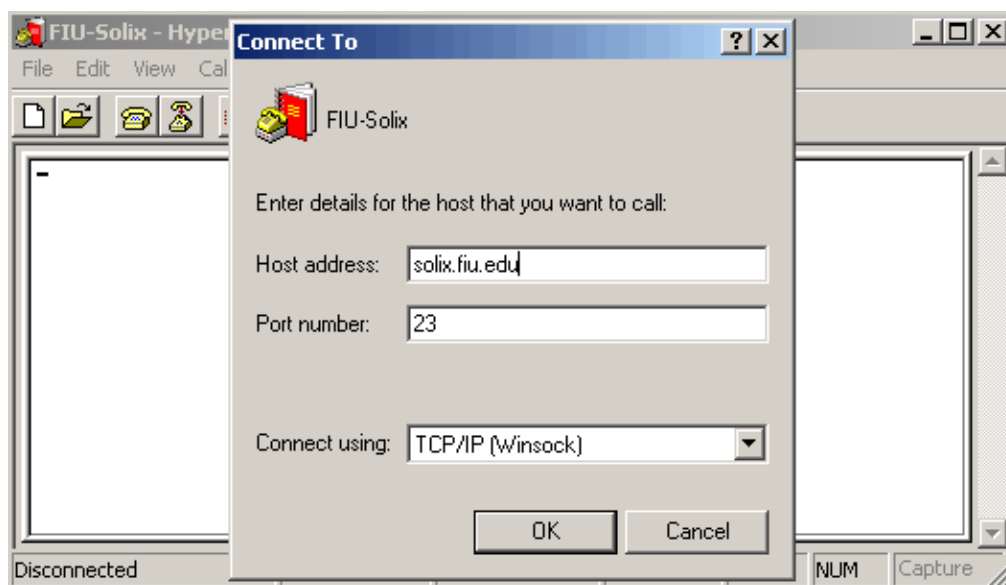


Enter FIU-Solix as the name. Choose an icon. Press OK.

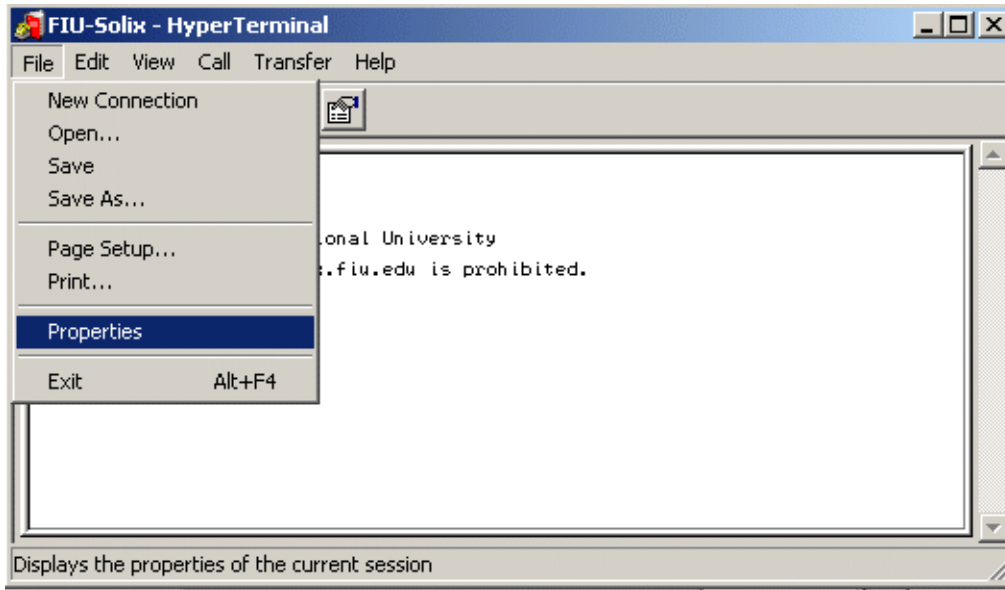
Select "TCP/IP(Winsock)" in "Connect using". Press OK.



Enter solix.fiu.edu as the "Host address". Be sure that "TCP/IP(Winsock)" is in the "Connect using" box. Press OK. You will be connected to FIU if you are connected to the Web.



Go to File. Click on Properties.

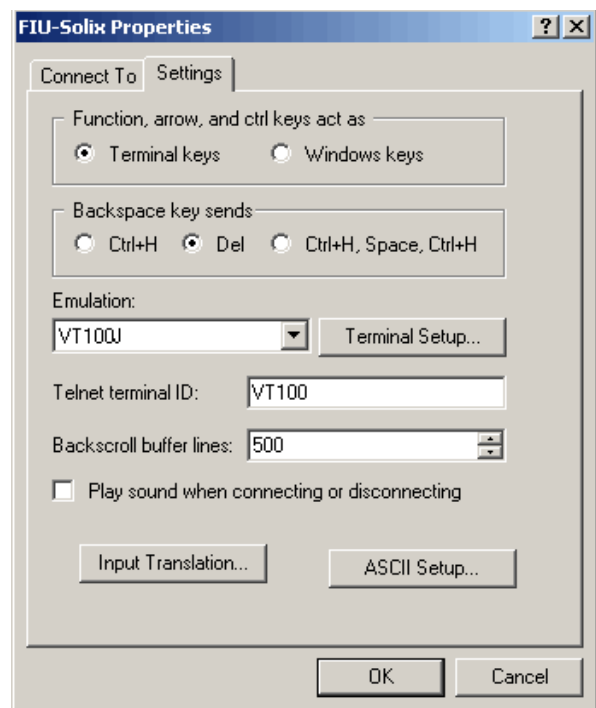
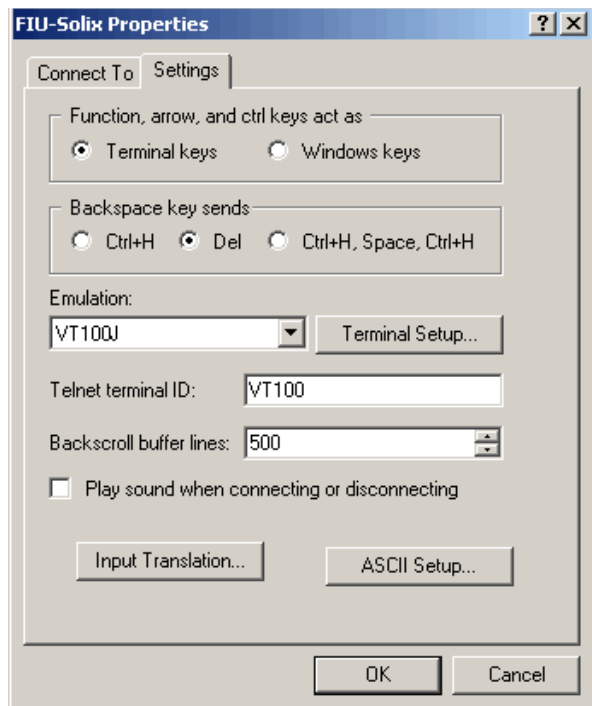


**Choose Settings.**

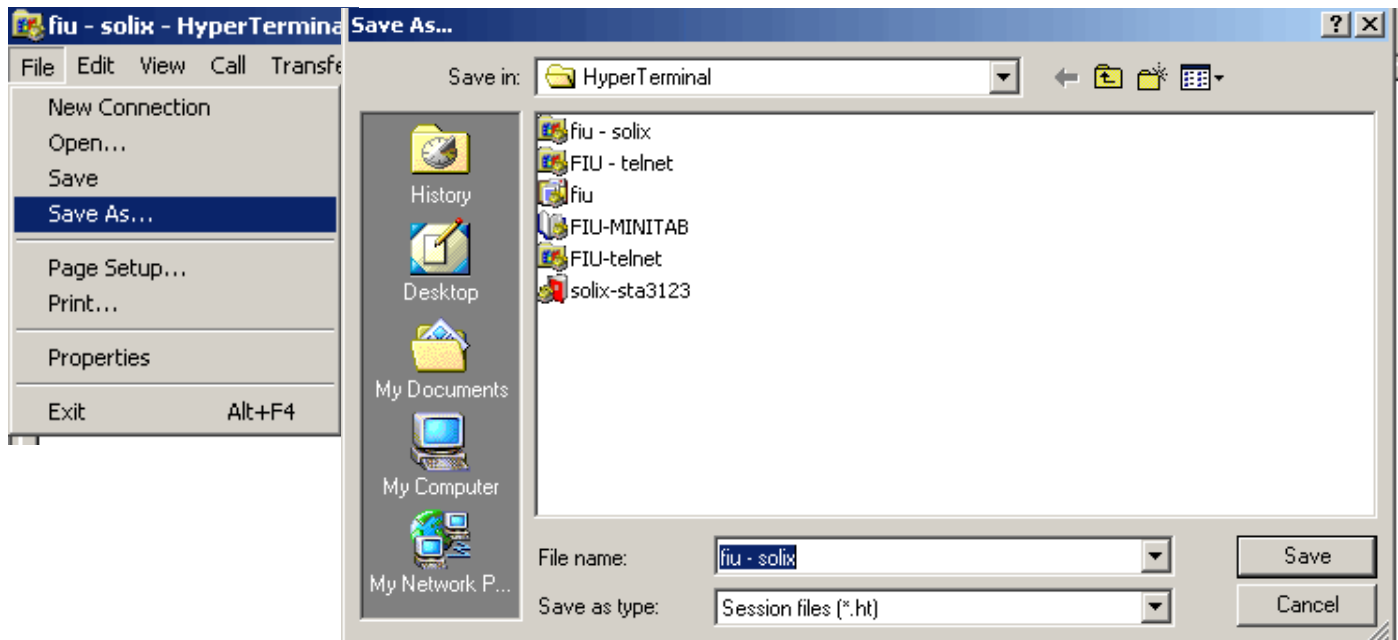
For "Backspace key sends" choose "Del".  
For "Emulation" choose VT100J.

**Choose "Send line ends with line feeds".**  
**Press OK then OK again**

**Click on "ASCII Setup".**

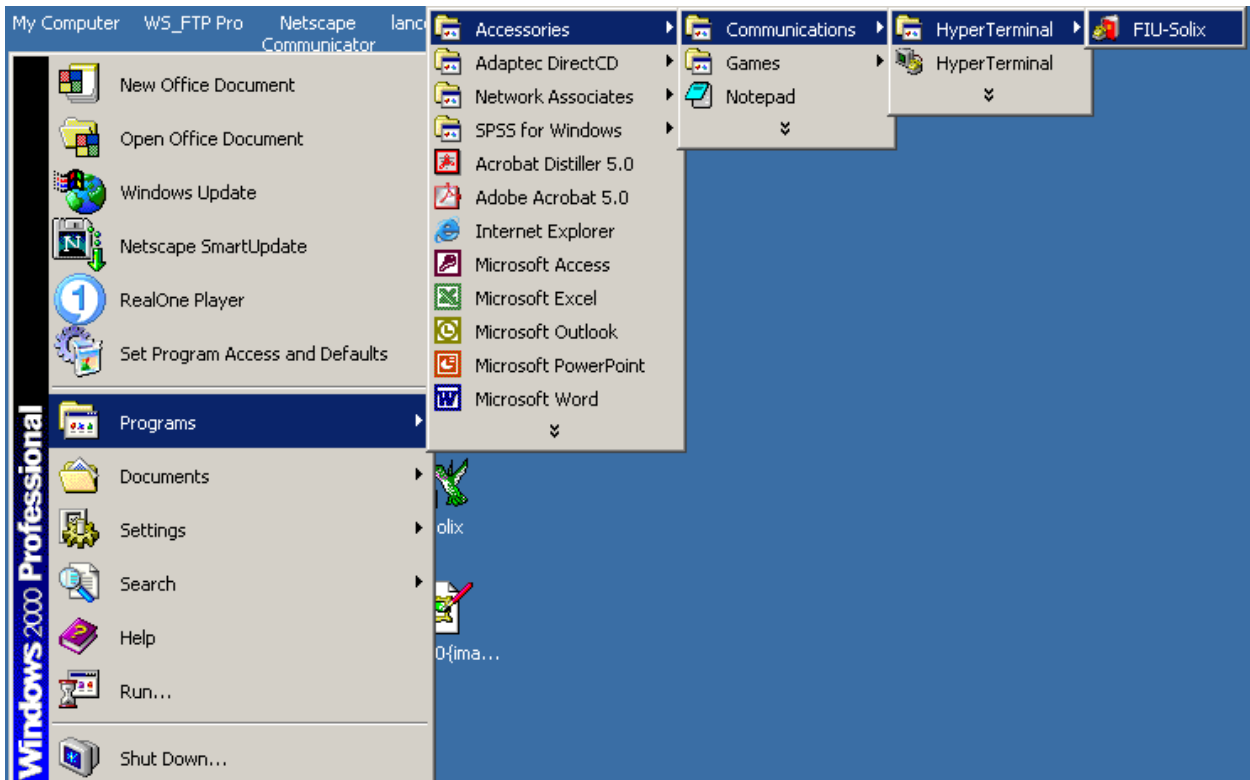


Go to File -> Save AS. Save as fiu-solix.



After saving the file, close HyperTerminal. The settings will not be in effect until you reopen HyperTerminal.

To open Hyperterminal, Go to Start -> Accessories -> Communications -> Hyperterminal -> FIU-Solix.



You can drag the icon with your mouse and move it to your desktop for easier access.